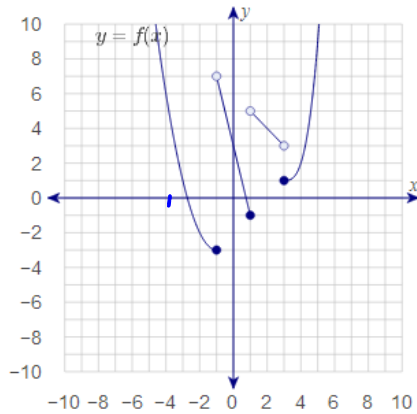


The graph of $y = f(x)$ is given below. At which points do the limits for f exist?



$$\lim_{x \rightarrow -1^-} f(x) = -3$$

$$\lim_{x \rightarrow -1^+} f(x) = 7$$

$$\lim_{x \rightarrow 1^-} f(x) = -1,$$

$$\lim_{x \rightarrow 1^+} f(x) = 5$$

$$\lim_{x \rightarrow 3^-} f(x) = 3,$$

$$\lim_{x \rightarrow 3^+} f(x) = 1 = f(3)$$